



IMAGE UPLOADER

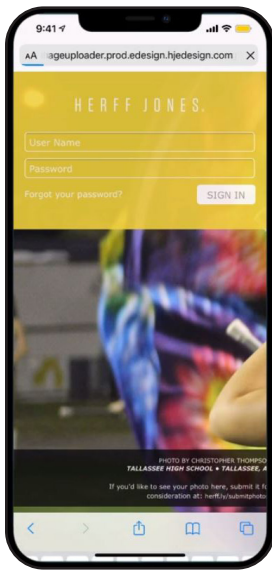
YOUR GUIDE TO USING EDESIGN

Using the Image Uploader allows you to be able to upload images that are taken using your camera phone directly into eDesign.

IMAGE UPLOADER

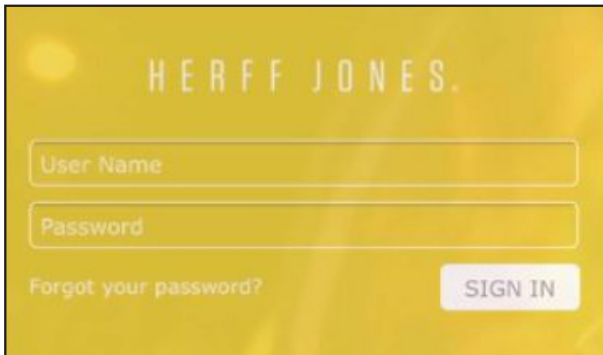
NAVIGATE TO IMAGE UPLOADER:

Open the browser on your phone. Enter the image uploader website: **herff.ly/uploader** into the search bar. Select eDesign Uploader.



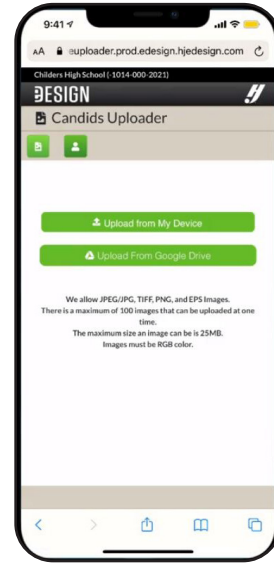
SIGN INTO EDESIGN:

Sign into eDesign using your assigned username and password that you use for accessing eDesign.



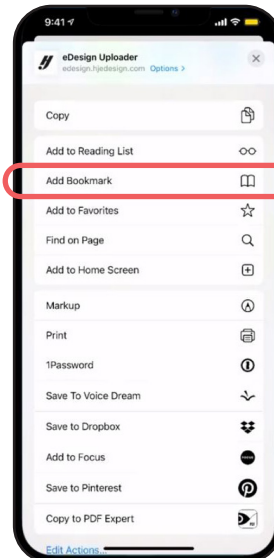
NAVIGATE TO IMAGE LOCATION

Select the location of the images that you would like to upload. It is possible to upload from your device or from your Google Drive.



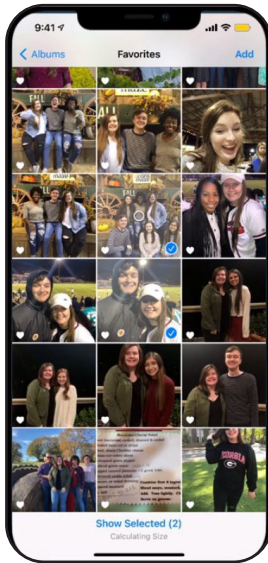
BOOKMARK THE PAGE:

Once you have logged in, Bookmark the web page so the next time you need to upload photos you will have a quick way to access the site.



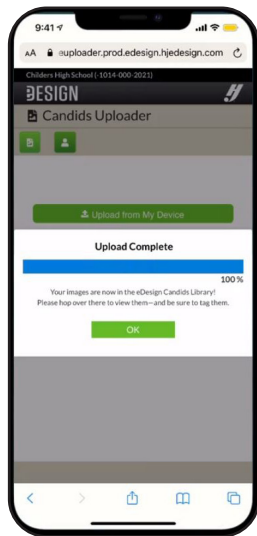
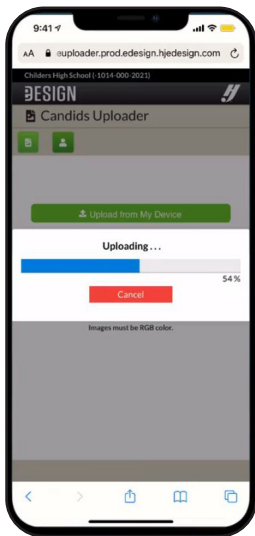
SELECT IMAGES:

Select the images that you would like to upload. You can select up to 100 images per upload. iPhone users can now upload HEIC photos into eDesign and they will be saved as JPEGs.



UPLOAD IMAGES:

Once you have your images selected, you can upload them into the eDesign application.



TAG IMAGES:

After your images have finished uploading, log into eDesign on your computer to tag the images.

In Library/Candids filter the images to "Recent" or "My Candids" to isolate the images you uploaded. Then select the images and give them descriptive tags to help locate them for later use.